

## Coast Daily Review

## Kuwait Market Performance

Thursday: 29 Jul 10

KSE Price Close: 6,654.9 (-12.8) ▼

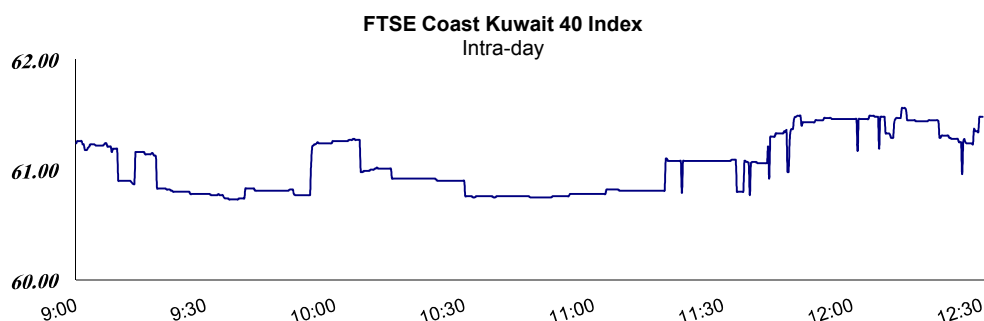
## Market Today

Kuwait Stock Exchange indices were mixed as the price index fell by 0.19% while the weighted index rose by 0.25%. Coast ICB sectors indices were mostly lower. The Industrial sector recorded the biggest gain of 1.79%. While the Logistics & Transport sector index fell the most as it lost 1.36%. On the group's side, Tamdeen index was the top gainer with 0.33% increase. Meanwhile, Agility group index was the top losing group index as it lost 1.79%.

	Today	Last	Change	% Chg.	YTD%
KSE Price Index	6,654.9	6,667.7	12.80	0.19%	-5.00%
KSE Weighted Index	419.24	418.2	1.04	0.25%	8.68%
FTSE Coast 40 Index	61.48	61.25	0.23	0.38%	5.80%
Coast Fundamental Index	90.95	91.06	0.11	0.12%	3.28%

Coast Sectors	Today	Last	Change	% Chg.
Banking	464.24	460.28	3.96	↑ 0.86
Investments	204.66	204.87	0.21	↓ 0.10
Financing	173.24	173.24	0.00	↔ 0.00
Insurance	108.01	108.82	0.81	↓ 0.74
Real Estate	152.01	153.54	1.53	↓ 1.00
Industrial	347.00	341.12	5.89	↑ 1.73
Construction Material	284.40	286.02	1.62	↓ 0.57
Holding Companies	350.51	354.18	3.67	↓ 1.04
Tourism & Media	128.84	128.97	0.13	↓ 0.10
Petrochemicals	383.80	386.64	2.84	↓ 0.74
Logistics & Transport	730.17	740.26	10.09	↓ 1.36
Retailers	594.75	592.41	2.34	↑ 0.40
Education & Support	404.60	403.69	0.91	↑ 0.23
Food	435.64	431.35	4.29	↑ 1.00
IT & Telecom	742.00	743.16	1.16	↓ 0.16
General Contracting	544.04	544.88	0.84	↓ 0.15

Market Movers	No. of Companies
Issues Advanced	34
Issues Declined	57
Issues Unchanged	136



This document and its content are prepared for your personal information purposes only and it is not an offer, or the solicitation of an offer, to buy or sell a security or enter into any other agreement. Projections of potential risk or return are illustrative, and should not be taken as limitations of the maximum possible loss or gain. The information and any views expressed are given as at the date of writing and subject to change. While the information has been obtained from sources believed to be reliable we do not represent that it is accurate or complete and it should not be relied on as such. Coast Investment and Development Company, its affiliates and subsidiaries accept no liability for any direct or consequential loss arising from use of this document or its contents. At any time, Coast Investment and Development Company or its employees may have a position, subject to change, in any securities or instruments referred to, or provide services to the issuer of those securities and instruments.

P. O. Box 26755, Safat 13128 - Kuwait  
Tel: + 965 22230555  
Fax: + 965 22408932

www.coast.com.kw

## Market Trade Statistics

KSE Price	Today	Last	Change	% Chg.
Market Capitalization (KD)	32,236,002,013	32,149,740,401	86,261,612	0.27
Total Traded Volume (Shares)	314,955,000	444,042,500	(129,087,500)	29.07
Total Traded Value (KD)	40,010,200	46,452,420	(6,442,220)	13.87
No. of Transactions	5,246	6,303	(1,057)	16.77

## Volume Leaders

	Price (fils)	Volume
GFH	41.5	50,240,000
ALSALAM	90.0	23,560,000
INVESTORS	25.0	20,400,000
SALBOOKH	77.0	14,160,000
HITSTELEC	52.0	12,320,000

## Top 5 Sectors by Volume

	Volume	% Chg.
Banking	70,490,000	0.86
Real Estate	55,250,000	1.00
Investment	43,410,000	0.10
Holding Companies	40,140,000	1.04
Petrochemicals	22,915,000	0.74

## Top Gainers

	Price (fils)	% Chg.
FCEM	110.0	7.84
FUTURE	340.0	6.25
MENAHOLD	204.0	5.16
UFIG	420.0	5.00
CLEANING	176.0	4.76

## Top Losers

	Price (fils)	% Chg.
THURAYA	22.0	10.20
AAYANRE	69.0	6.76
GCEM	130.0	5.80
GFH	41.5	5.68
ALSALAM	90.0	5.26

## Corporate Actions

Company Name	Ex- Date	Events
Acico Industries	3-Jun-10	Cash dividends 10% / Stock Dividends 5%
Al-Nawadi Holding and Investment Co.	31-May-10	New listed in Services sector
Ithmaar Bank (Bahrain)	21-Apr-10	Became to Islamic Bank
Commercial International Bank (Egypt)	16-Sep-10	Delisting from the Kuwait Stock Exchange
Al-Masar Leasing & Investment Co.	15-Apr-10	New listed in Investment sector
Bank of Kuwait and the Middle East	1-Apr-10	Name Change to United Ahli Bank

## General Assemblies

Dates	Company
2010/06/14	Ahlia Insurance Co.
2010/06/10	Public Warehousing Co.
2010/04/26	Kuwait Cement co.
2010/04/21	Future Kid Co.
2010/04/19	Kuwait Projects Co.
2010/04/05	Gulf Cables Co.
2010/04/05	Credit Rating and Collection Co.
2010/04/05	National Mobile Telecommunications Co.
2010/04/05	Burgan Bank
2010/04/03	Kuwait International Bank

## Industry P/E ratios

Index	P/E
Banking	14.69
Investment	3.48
Financing	5.74
Insurance	10.16
Real Estate	11.75
Industrial	1.68
Construction Material	12.91
Holding Companies	6.95

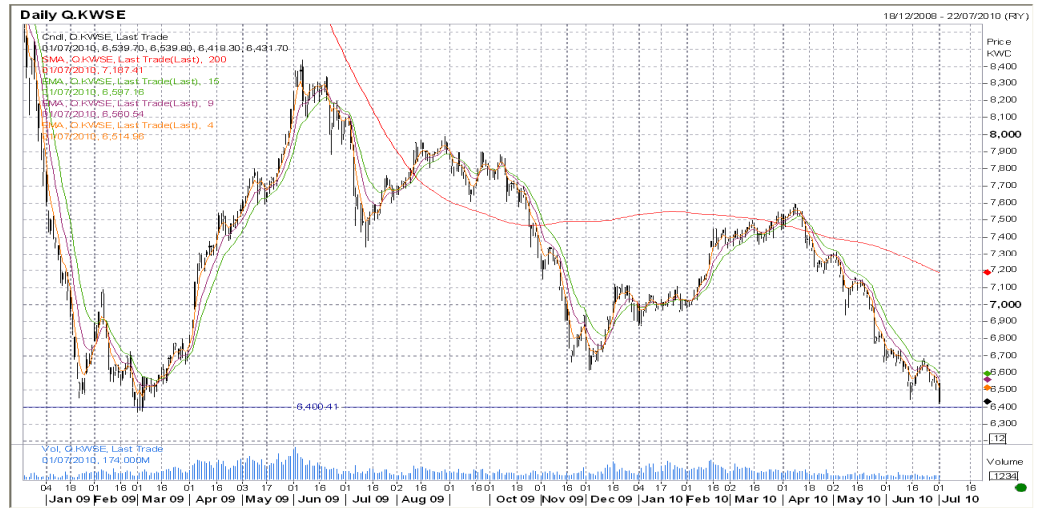
Index	P/E
Tourism & Media	4.19
Petroleum & Chemicals	15.52
Logistics & Transportation	1.97
Retailers	22.79
Educational/Support Services	13.42
Food	15.90
Telecom & IT	20.94
General Contacting	17.06
<b>Market PE</b>	<b>14.88</b>

## Conventional P/E ratios

Index	P/E
Banking	12.01
Investment	3.37
Insurance	11.02
Real Estate	11.70

Index	P/E
Industrial	7.34
Services	17.74
Food	15.91
Non-Kuwaitis	24.01
<b>Market PE</b>	<b>14.88</b>

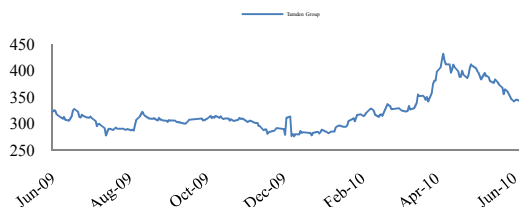
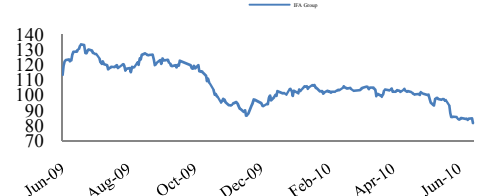
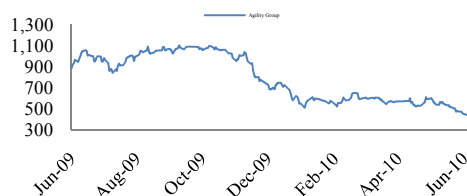
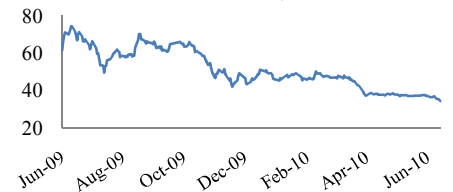
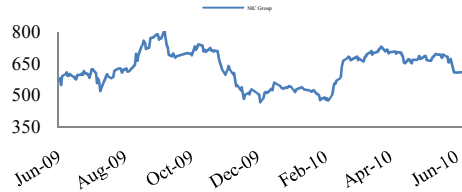
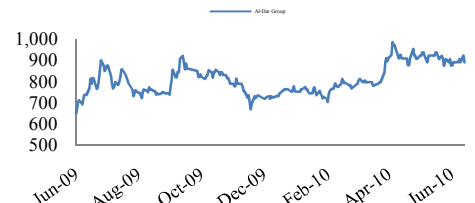
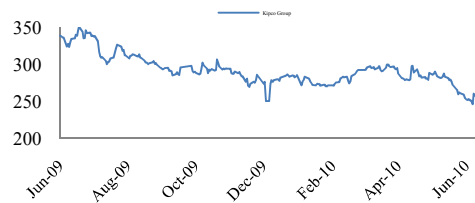
Technical Analysis



- \* KSE price index closed above the resistance level at 6,650 points.
- \* Trading activity is at medium levels.
- \* First support is at 6,650 and the second support level is at 6,500.

Groups Performance

Group	Index	Volume	Daily Return	Monthly	YTD%	P/E
KIPCO	267.45	2,970,000	0.54%	5.19%	6.47%	4.33
Al Dar	893.13	1,360,000	0.02%	6.96%	18.89%	0.00
NIC	624.87	12,252,500	0.13%	8.41%	15.30%	20.06
Int'l Invest.	30.74	31,200,000	0.39%	8.14%	33.07%	0.00
Agility	466.24	8,800,000	1.79%	37.42%	14.73%	2.60
IFA	78.69	16,880,000	0.56%	0.04%	23.38%	0.12
Tamdeen	384.55	2,925,000	0.33%	11.07%	33.03%	43.93



**Sulaiman Al Abduljader**  
Vice President  
sulaiman.jader@coast.com.kw  
Ext. 508

**Abdullah Al Hasawi**  
Senior Financial Analyst  
abdulla.alhasawi@coast.com.kw  
Ext. 512

**Burhan Kamali**  
Senior Financial Analyst  
burhan.kamali@coast.com.kw  
Ext. 514

**Yousef Al Roumi**  
Investment Analyst  
yousef.alroumi@coast.com.kw  
Ext. 578

**Manal Sabbah**  
Investment Analyst  
manal@coast.com.kw  
Ext. 579

**Mohammad Al Hajeri**  
Investment Analyst  
mohammad.alhajeri@coast.com.kw  
Ext. 517

**Talal Al Hunaif**  
Investment Analyst  
talal.alhunaif@coast.com.kw  
Ext. 567

**Zaina Al Mershed**  
Marketing Officer  
zaina.almershed@coast.com.kw  
Ext. 577

This document and its content are prepared for your personal information purposes only and it is not an offer, or the solicitation of an offer, to buy or sell a security or enter into any other agreement. Projections of potential risk or return are illustrative, and should not be taken as limitations of the maximum possible loss or gain. The information and any views expressed are given as at the date of writing and subject to change. While the information has been obtained from sources believed to be reliable we do not represent that it is accurate or complete and it should not be relied on as such. Coast Investment and Development Company, its affiliates and subsidiaries accept no liability for any direct or consequential loss arising from use of this document or its contents. At any time, Coast Investment and Development Company or its employees may have a position, subject to change, in any securities or instruments referred to, or provide services to the issuer of those securities and instruments.

**Coast Investment & Development Co.**  
Shuhada Street, Al Sharq Area

**P. O. Box 26755, Safat 13128 - Kuwait**  
Tel: + 965 22230555  
Fax: + 965 22408932

[www.coast.com.kw](http://www.coast.com.kw)